

PLAN VIEW

BASE & WALLS ONLY
REINFORCING REMOVED

24" RACKING HARDWARE
ALL SIDES 4 1/2" FROM
INSIDE CORNER

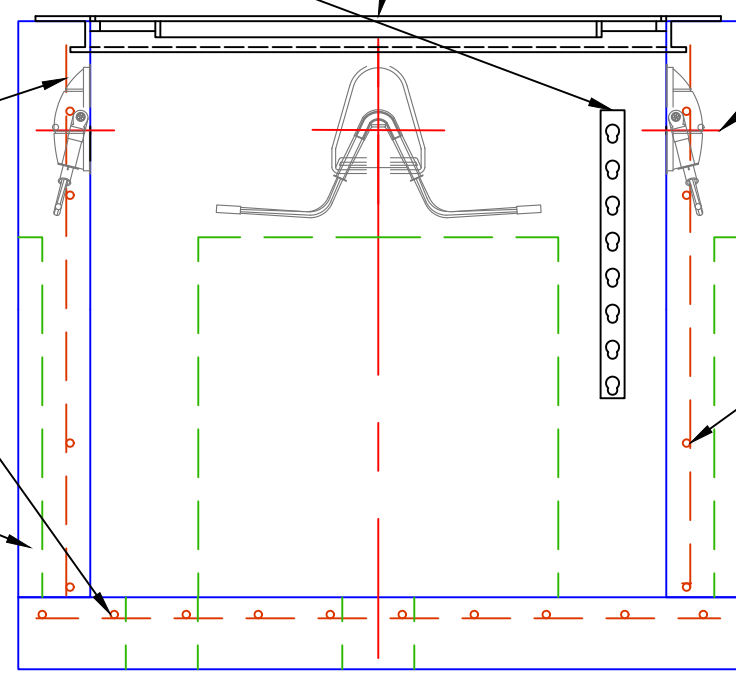
INWESCO 4848ST-CADP-300H
CAST INTO BOX

1 MAT 4X4 D6.7 STEEL
2" CLEAR INSIDE FACE

PULLING IRON

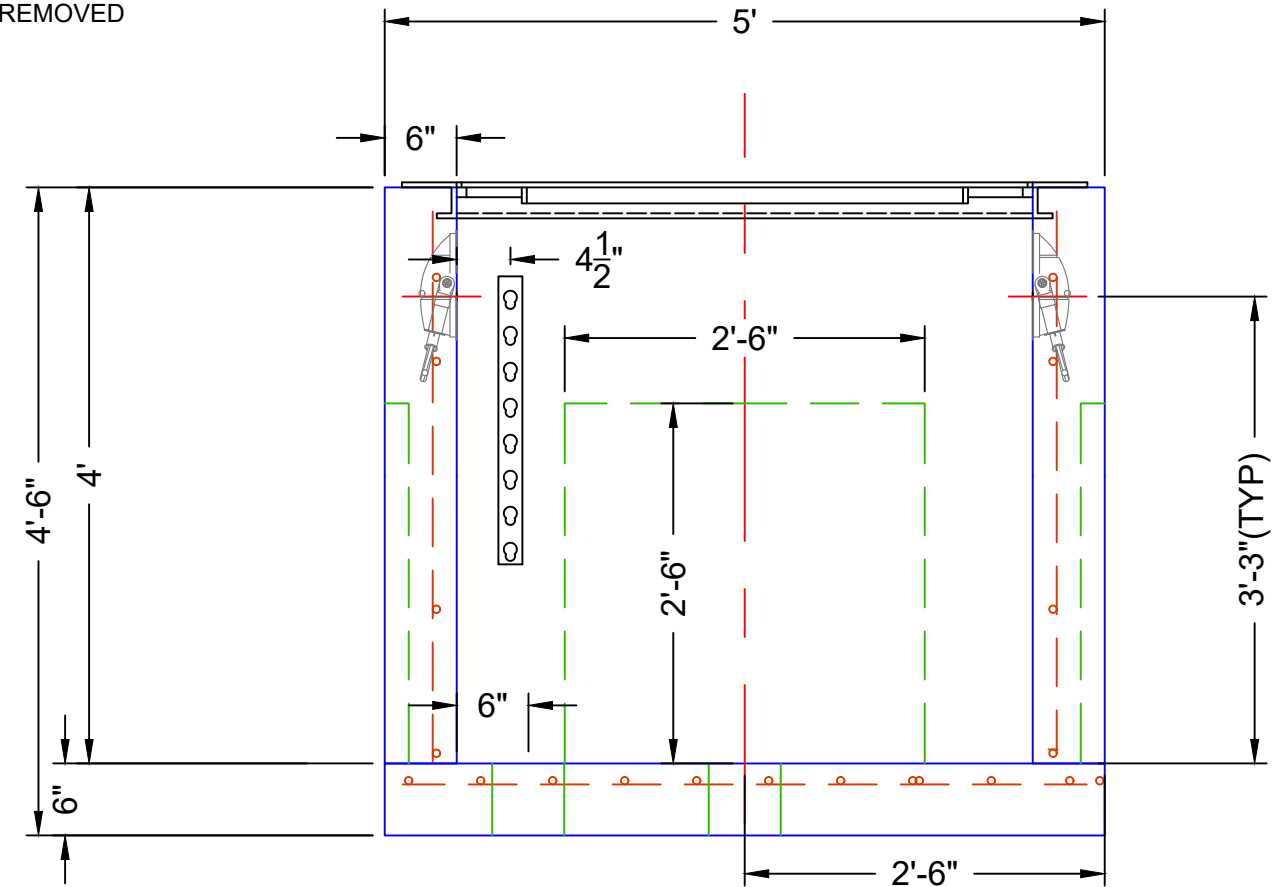
1 MAT 4X4 D6.7 STEEL
2" CLEAR INSIDE FACE

30"X30" THIN WALL KNOCKOUT
EACH SIDE



PROFILE VIEW

SIDE 270°



PROFILE VIEW

SIDE 0°



Rev. Date	Desc.	Job #	Project:	Client:	Drawn By:	Structure Type:
-	-	-	ELECTRICAL MANHOLE	NPCP	LC	4X4 ELECTRIC MANHOLE